

ChargeBox®

Keeping the mobile world powered

Technical Specifications

ChargeBox Max

Phone & Tablet Charging

ChargeBox® Unit 2D, Bollo Lane, Chiswick, London, W4 5LE

+44 (0)20 3588 1060

| info@chargebox.com

| www.chargebox.com

Introduction

ChargeBox is the global leader and pioneer in providing self-service charging solutions for public spaces. Distributed to over 40 countries and over 2,000 stations deployed, our systems deliver more than 7 million charges to mobile devices annually across business sectors.

Our in-house team is responsible for designing, software coding, engineering and assembling all stations in the UK while maintain a primarily EU supply chain.

The Best Customer Experience is Paramount

At the core of ChargeBox is to deliver a wonderful client and customer experience.

Maximum Security — Patent pending SmartLock 2.0 key system. Charging over 7 million devices annually we experience zero device theft or damage.

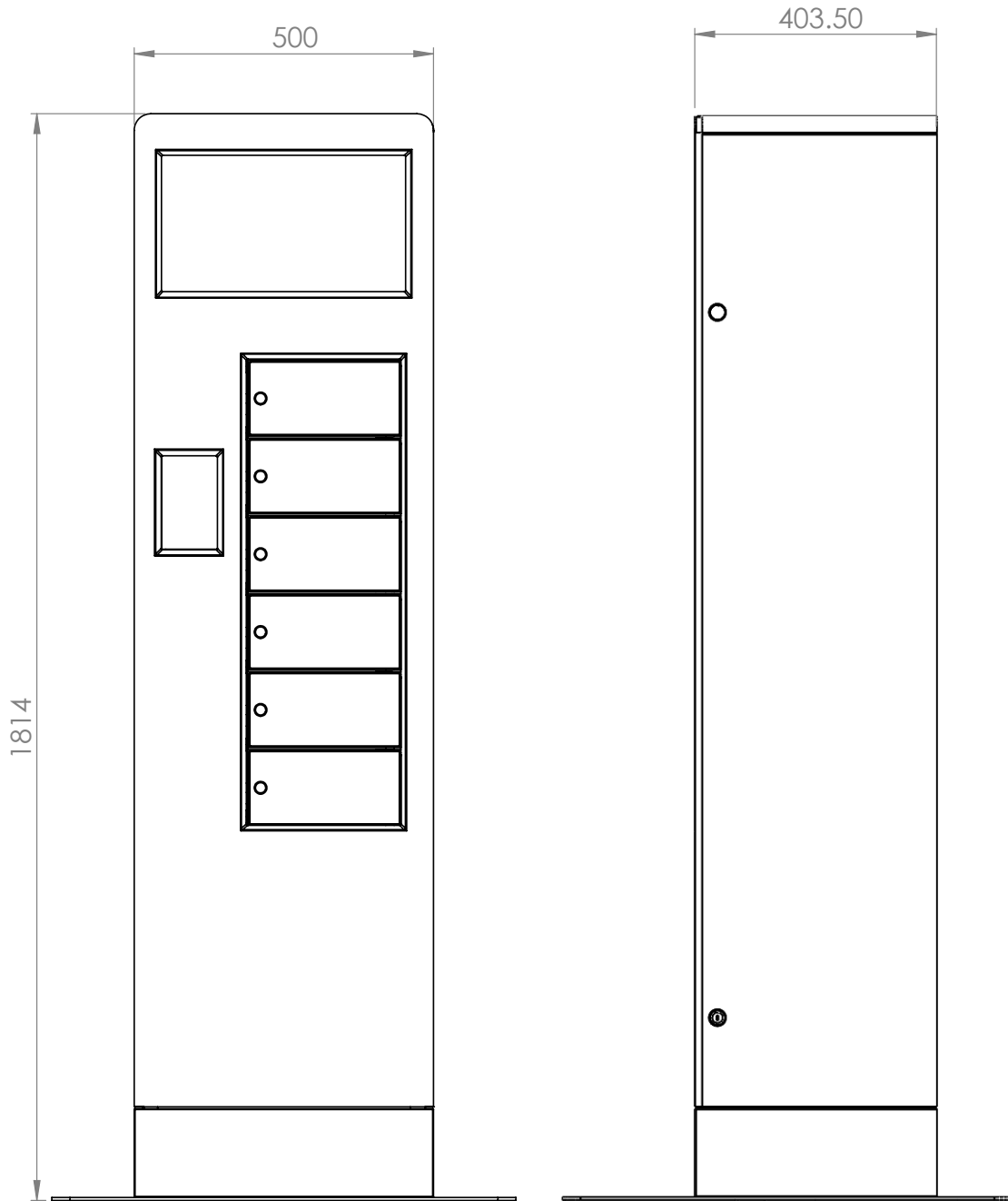
Ease of Use — ChargeBox's proprietary SmartLock system detects your device before enabling you to secure the door. It takes as few as 4 seconds to use connect a device then secure the locker. Furthermore, should power be cut to the station, the user is always in control of the security and can retrieve their device at any time using their key.

Best Charging Technology — Our certified technology is capable of charging iPhones in half the time compared to the packaged wall charger Apple supplies. Our iPhone and iPad charging cables are sourced directly through Apple Inc.

Real-time Analytics — Enables management information, automated remote diagnostics, and service monitoring.



Specification	Detail	Options
Composition	Mobile device charging station with securely fitted USB charging cables in 6 lockers utilising proprietary SmartLock Key System. Floor-fixed frame and cabinet.	CE certified anti-topple floor plate is available, finished matt black (RAL 9005 matt)
Dimensions & Weight	- 1814(H) x 500(W) X 404(D) mm - 95Kg	Floor plate footprint measures 775 (L) x 750mm (W) x 5mm (H) and 22Kg weight
Dimensions & Weight (packed)	- 1900(H) x 600(W) x 610(D) mm - 100Kg	130Kg total including the optional base plate packaged separately
Electrical	110V (60Hz), 220V (60Hz), or 240V (50 Hz) with fused 3A supply. PSU is rated at 150W	
Power Usage (idle)	~ 50W	
Typical Power Usage	~ 90W (includes 2-3 tablets charging)	
Max Power Usage	~ 120W with 6 lockers on full charge	
Colour	Traffic White finish (RAL 9016)	Full exterior branding available with vinyl wrap
Cabinet	Steel panels to all faces. Hinged front panel and maintenance-friendly slide out locker assembly	
Computer & User Interface Panel	ARM-based Single Board Computer controlling 7" capacitive-layer touch display. Touchscreen provides user instructions and engineer access diagnostics. Multi-language support included	Additional language development options
Lockers	Six chambers, offering guaranteed* security by way of proprietary SmartLock key system. Charging one device per chamber, with multiple USB connectors available	*Subject to service level agreement
USB charging cables	Standard specification: 16 no. high-current (2.1Amp / 10W) universal charging for all USB devices. Combination of enhanced microUSB, Type-C and genuine Apple cables securely fitted.	- Additional 8 charging points optional - Support for all USB Power Delivery power levels; 15 / 27 / 45 / 60W optional
Display Monitor	Not specified	The single board computer is capable of controlling media to third party displays. Some development may be required.
Connectivity	Ethernet/WiFi telemetry: transmits data relating to all aspects of the machine's performance, status and health	GSM router can be connected via ethernet or WiFi to the single board computer. Recommended data allowance: 250mb/month excluding changes to digital signage
Management Information	Real-time analytics enables management information, automated remote diagnostics, and service monitoring	Full or partially managed service options
Customer Engagement	None as standard	Bespoke software developments available. E.g. phone number entry.



UNLESS OTHERWISE SPECIFIED:
 DIMENSIONS ARE IN MILLIMETERS
 SURFACE FINISH:
 TOLERANCES:
 LINEAR:
 ANGULAR:

FINISH:

DEBUR AND
 BREAK SHARP
 EDGES

DO NOT SCALE DRAWING

REVISION

CHARGEBOX LTD.

**TITLE:
 TABLET MACHINE
 DIMENSIONS**

	NAME	SIGNATURE	DATE		
DRAWN					
CHK'D					
APP'VD					
MFG					
Q.A					

MATERIAL:

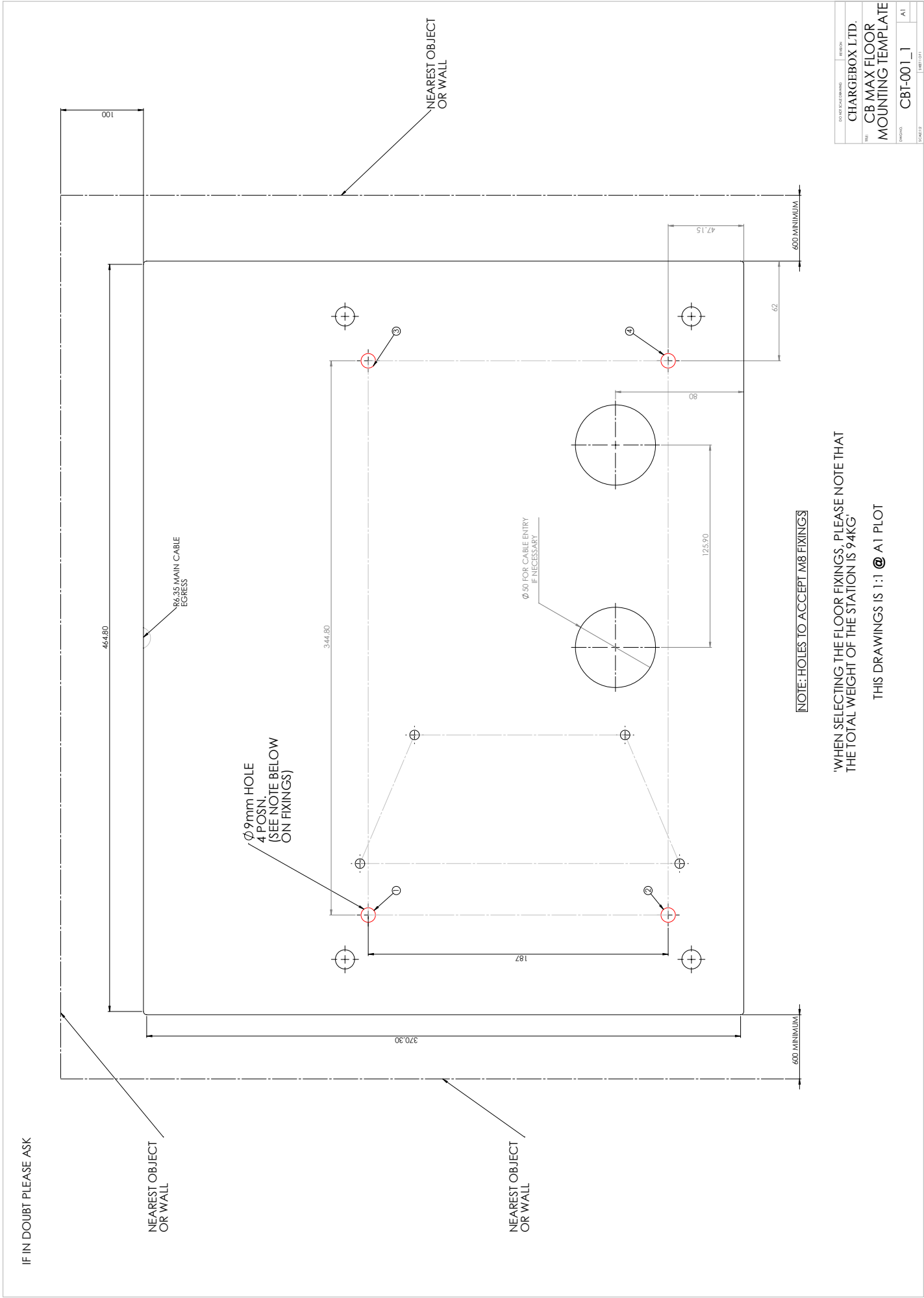
DWG NO.

A4

WEIGHT:

SCALE:1:20

SHEET 1 OF 1



DO NOT SCALE DRAWING	REVISION
CHARGEBOX LTD.	
TITLE	CB MAX FLOOR MOUNTING TEMPLATE
DRAWING	CBT-001_1
	A1
	SHEET COUNT

ChargeBox Max on Location

